

## MAXPRO CLOUD AT-A-GLANCE

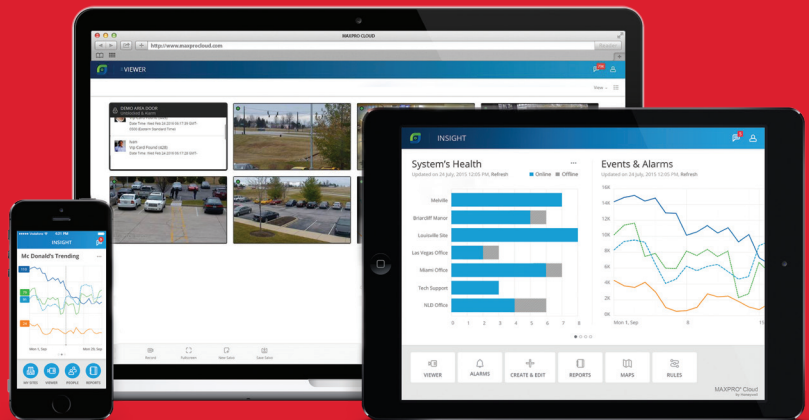


MAXPRO Cloud

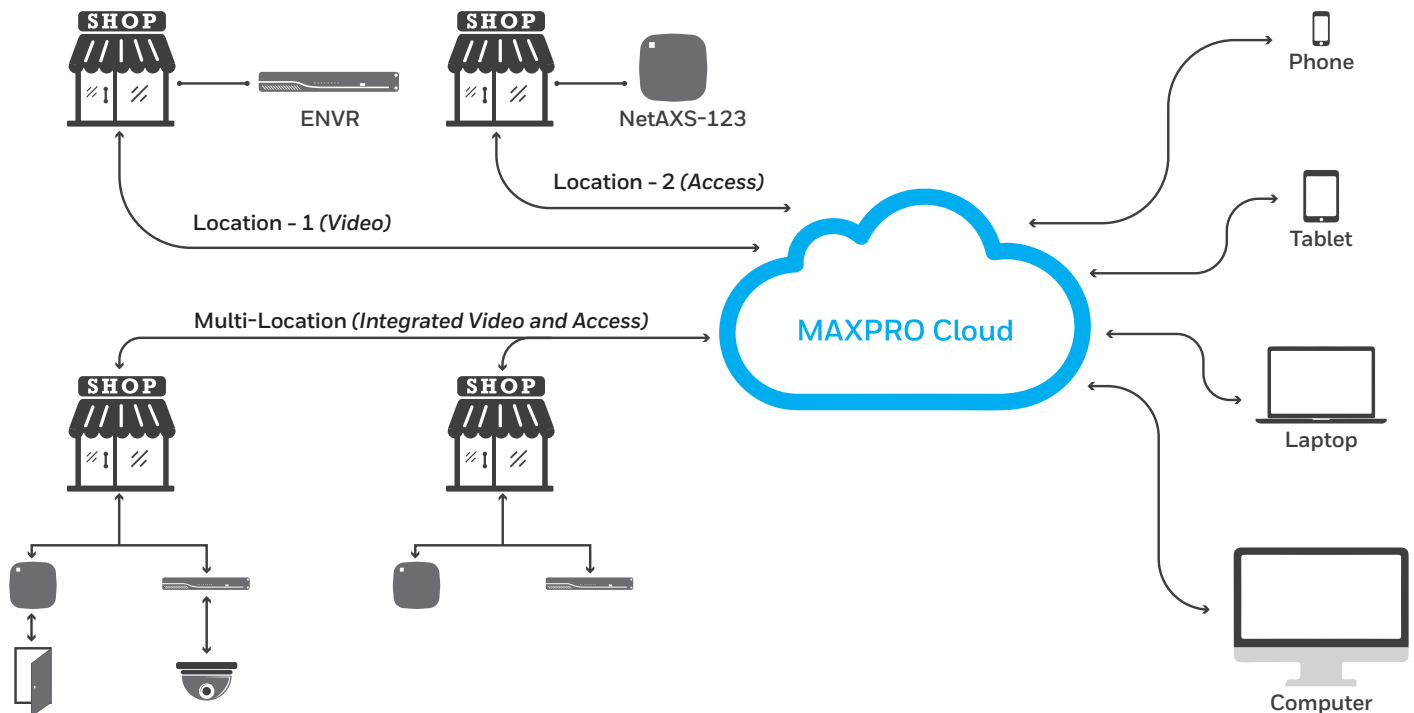
## PROFITABILITY TO THE MAX

**MAXPRO Cloud is a cloud based business intelligence platform which brings integrated access control and video surveillance into a single-user interface across one or multiple locations. With MAXPRO Cloud users get more from their systems by providing real time insight to their business and instant notifications to any potential issues or threats to their security. Integrators can relish in the idea that they can now get RMR from cloud hosted access control and video while lowering their installation and service costs. MAXimize RMR, MAXimize Installations and MAXimize Performance with MAXPRO Cloud.**

- Integrated Access Control and Video with plug and play devices
- Cloud hosted – scalable, expandable, efficient – no servers required
- Its secure, HTTPS login and 256 bit encryption, high availability data centers
- Designed for a mobile first world with access to information anywhere, anytime
- Automatic software and firmware updates reduces truck rolls
- Multi-location management of all accounts from a single user sign-in

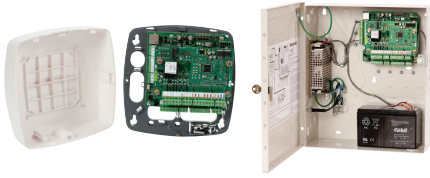


## HOW DOES IT WORK?



**MAXimize Revenues // MAXimize Installations // MAXimize Performance**

## WHAT DEVICES CAN I CONNECT?



**NX1P**

**NX1MPS**



**Performance NVR**



**MPCDEMO**

### Plug-n-Play Out of the Box

Edge device or  
standard enclosure options

Expandable with add-on boards

Compatible with all legacy  
NetAXS-123 installations

### Plug-n-Play Cloud Ready

HD IP up to 5MP

4, 8 and 16 channel

Full PoE for all channels

Convenient and flexible  
storage options

Demo kit to be installed at  
dealer facility (limit 1 per dealer)

1 - HEN08112 - ENVR 8 channel

1 - H4D3PRV2 - 4" Indoor/Outdoor  
Dome 2.7-12mm

1 - NX1P - Access Control Panel

1 - OP10HONR - Card Reader

5 - LF Prox ISO Cards

## TARGET MARKETS

MAXPRO Cloud is an ideal solution for multi-location small to medium businesses. Single-sign on to multi-sites allows customers to access and manage their systems from anywhere.



**Retail**



**Professional  
Services**



**Convenience**



**Small/Medium  
Commercials**



**Remote Buildings**



**Property  
Management**

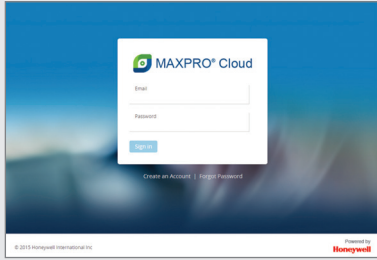
### Typical Customer

- Multi-Location / Local or National
- Tiered Hierarchy Operators
- 5,000 sq. ft. or less
- 3 to 4 Doors Access
- 6 to 8 Cameras
- 30-50 Employees

### Customer Value

- Reduce number of false alarms with verification of events
- Improve efficiency and lower operational costs with intelligent business insight
- Increase store sales, by monitoring traffic flow, employee performance, store cleanliness and customer queues
- Access system from anywhere, make quick informed decisions
- Multi-location management through a single user login to all sites

## HOW DO I SIGN UP?



**Create a cloud account**  
(first time only)

<https://mymaxprocloud.com/signin>  
Or Visit [www.maxprocloud.com](http://www.maxprocloud.com)  
Click on **myaccount**



**Complete the  
dealer information form**



**Honeywell will contact you  
within 24 hours**

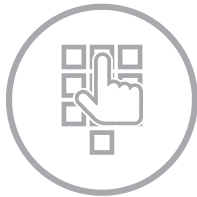
## SUPPORT INFORMATION



**1-800-323-4576**



For **Customer Service**  
Select Option 1



For **Technical Support**  
Select Option 2



Then Select Option 1 for  
**Cloud Services**



[www.honeywellsystems.com/  
support](http://www.honeywellsystems.com/support)

### For more information:

[www.maxprocloud.com](http://www.maxprocloud.com)

### Honeywell Security and Fire

2700 Blankenbaker Pkwy  
Suite 150, Louisville  
KY 40299  
1.800.323.4576  
[www.honeywell.com](http://www.honeywell.com)

L/MPCATGLNB/D | 1/17  
© 2017 Honeywell International Inc.

**Honeywell**